

TOWNHOUSES 3 BEDROOM

MID-UNIT | TYPE SM | 2,378 SQFT

FEATURES

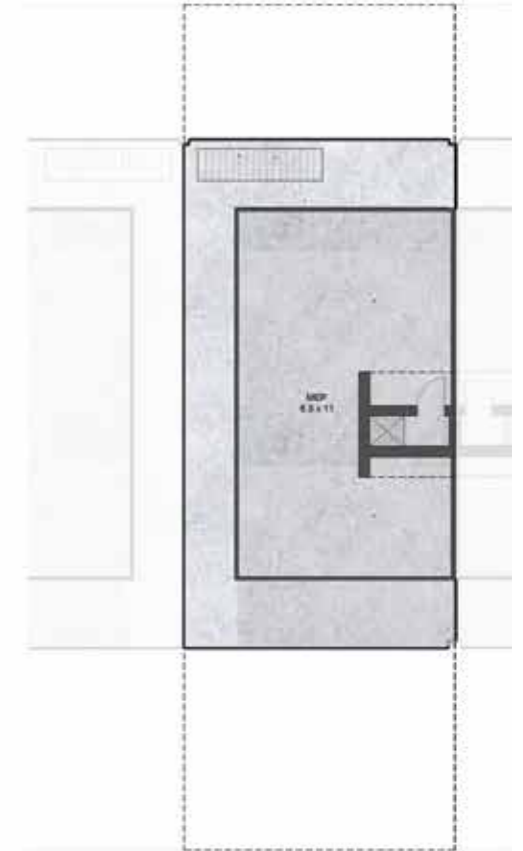
- 3 EN-SUITE BEDROOMS
- STORE ROOM
- OUTDOOR GARDEN
- FAMILY LOUNGE
- LIVING & DINING
- 2 PARKINGS
- MAID'S ROOM
- SEMI CLOSED KITCHEN



Ground Floor



First Floor



Roof Floor

NO. OF BEDROOMS	03 + (FAMILY LOUNGE)
FLOOR CONFIGURATION	G+1
TOTAL SELLABLE AREA	2,378 sqft
PLOT SIZE	2,104 sqft*

All materials, dimensions, and drawings are approximate only, including actual areas. / Information is subject to change at developer's discretion, without notice, and developer reserves the right to make revisions without liability. / All images used are for illustrative purposes only and do not represent the actual size, features, specifications, fittings, and furnishings.